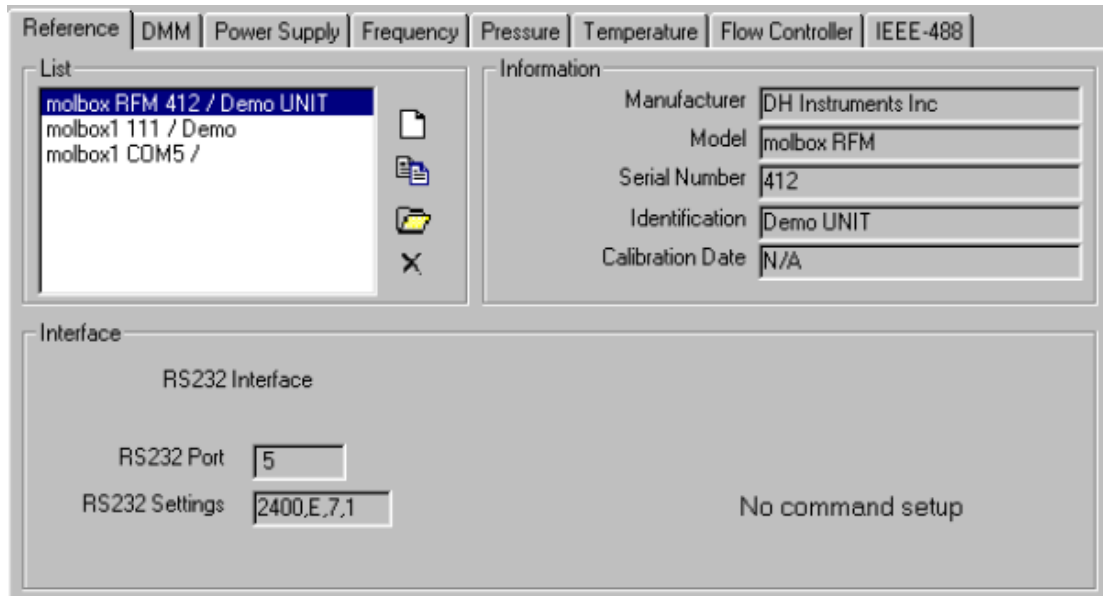


## molbox setup in COMPASS for molbox

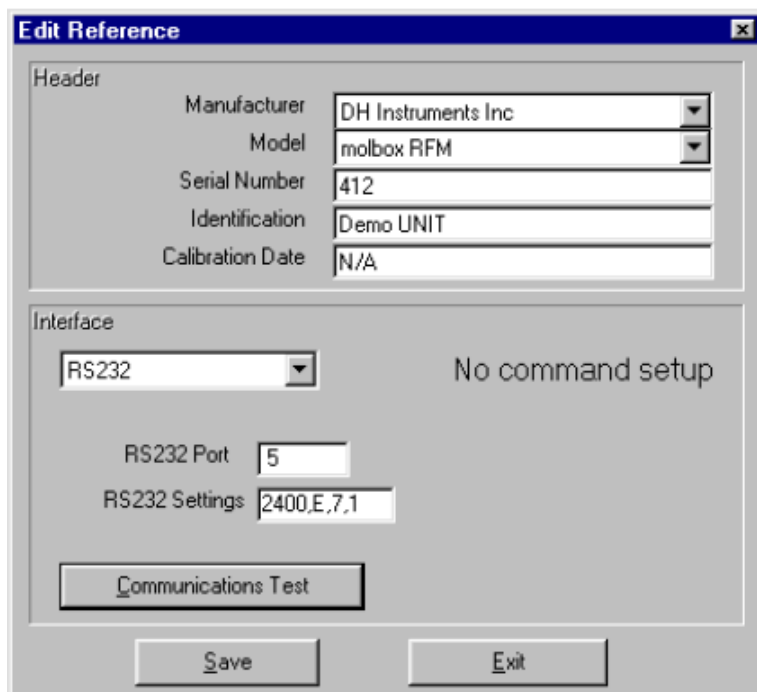
Reference device setup, molbox RFM. Don't need commands. COMPASS knows them.

[Setup], [Hardware], [Reference] tab. Double-click device to edit or view details



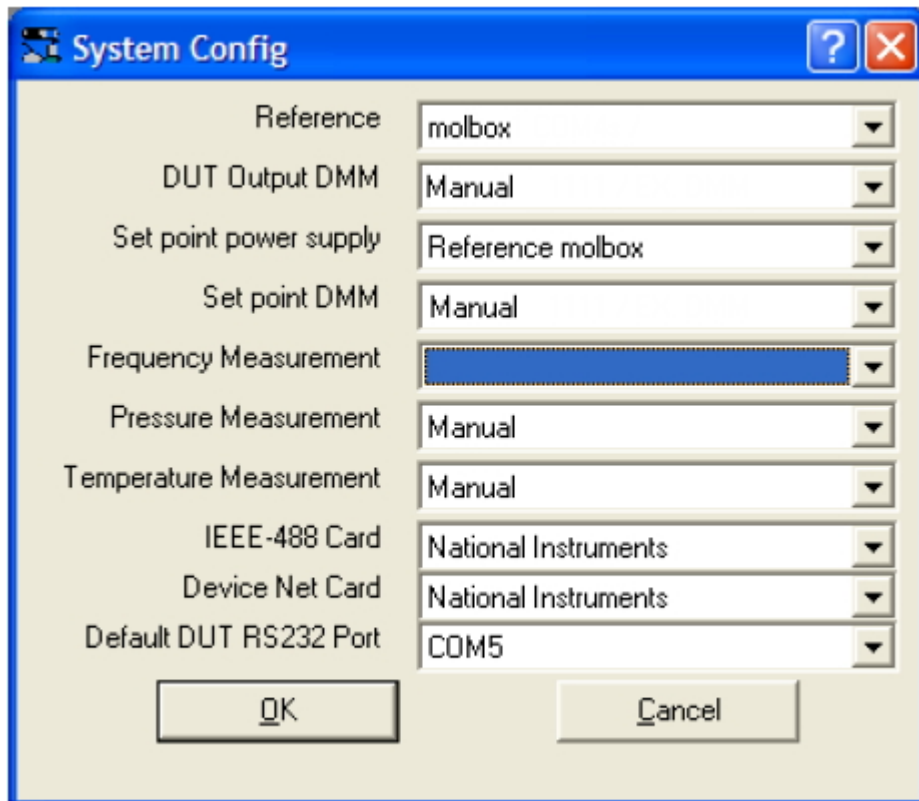
Click [Communications Test] to test the remote communications

Click white boxes next to "RS232 Port" or "RS232 Settings" to edit the RS232 settings



## Setup, System window

Select hardware that will be used in the test



The image shows a 'System Config' dialog box with a blue title bar and standard Windows window controls (help, close). The dialog contains a list of configuration options, each with a dropdown menu. The 'Frequency Measurement' dropdown is currently selected and highlighted in blue. At the bottom of the dialog are 'OK' and 'Cancel' buttons.

Reference	molbox
DUT Output DMM	Manual
Set point power supply	Reference molbox
Set point DMM	Manual
Frequency Measurement	[Selected]
Pressure Measurement	Manual
Temperature Measurement	Manual
IEEE-488 Card	National Instruments
Device Net Card	National Instruments
Default DUT RS232 Port	COM5

Buttons: