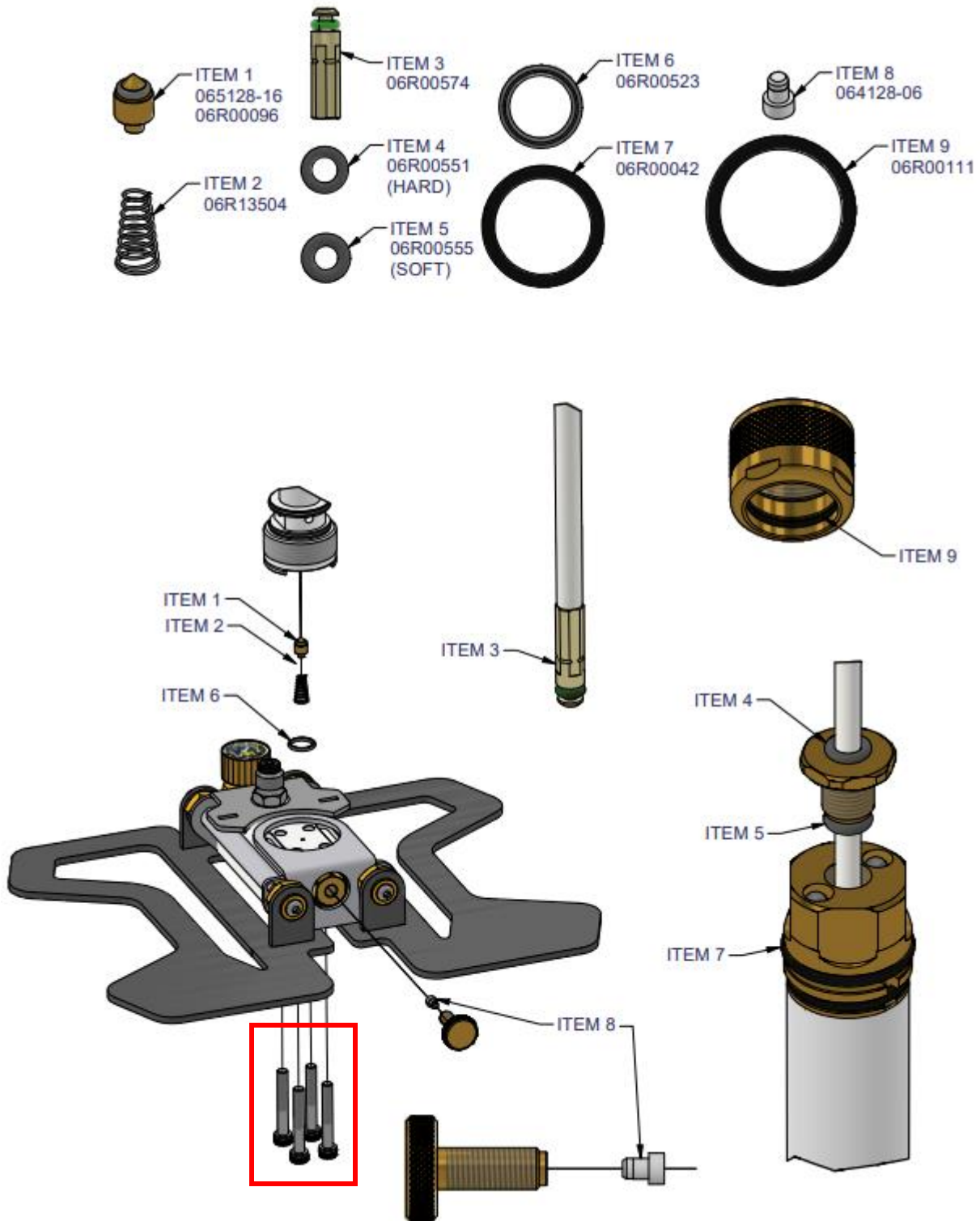


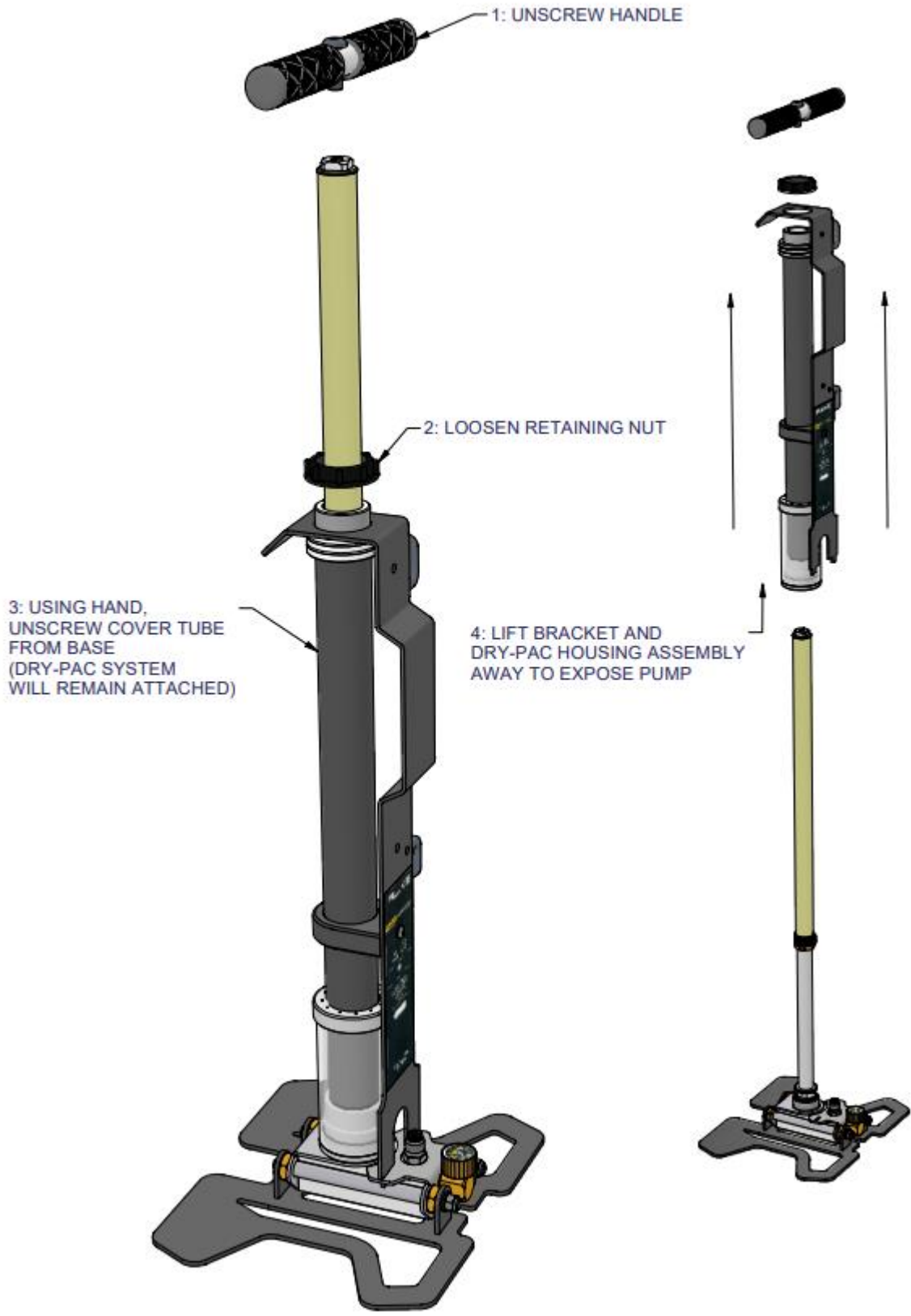
Fluke® 700HPP High Pressure Pump (2nd gen)

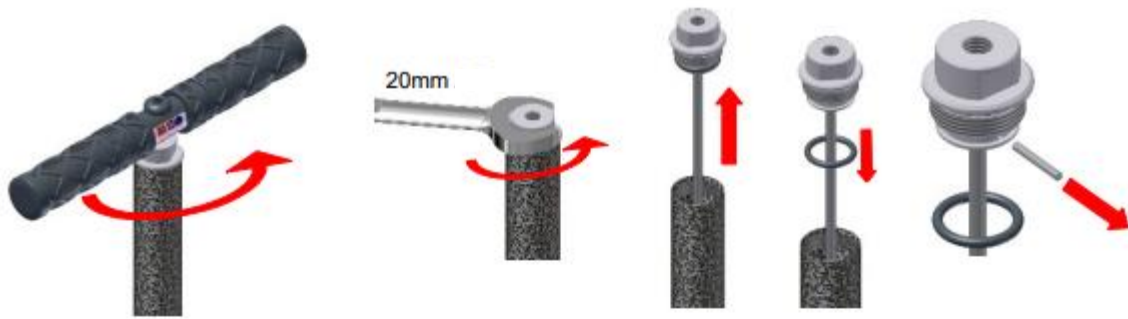
Maintenance for second generation model released Spring 2022

Second gen. model has non-return valve mounted to pump base with 4 screws that are visible from bottom of pump (highlighted in red below). Piston is now a replaceable part.



REMOVING THE BRACKET AND DRY-PAC HOUSING ASSEMBLY

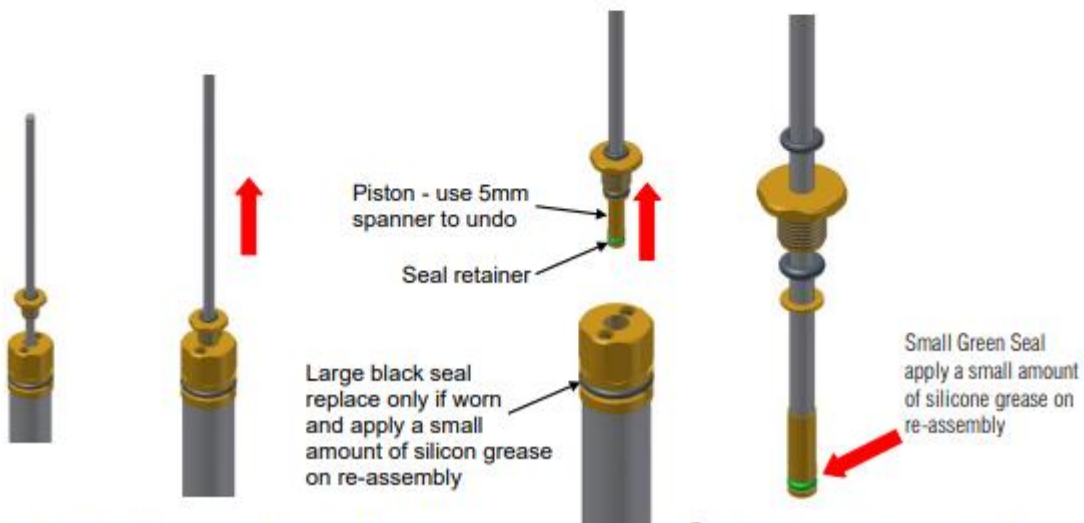




1. Unscrew and remove handle 2. Unscrew handle connector 3. Lift handle connector to o'ring. Remove o'ring to expose pin. Use suitable tool to push pin from one side and then pull out. **Ensure o'ring is securely located in groove on re-assembly.**

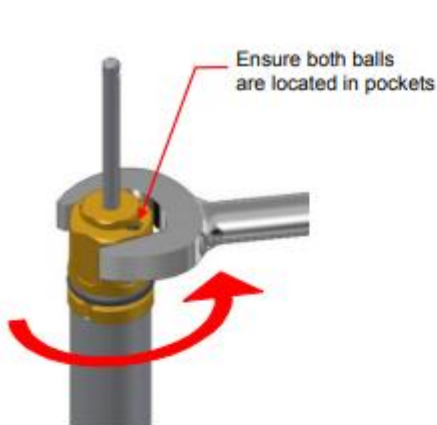


4. Unscrew outer body tube end cap and remove body tube 5. Unscrew the ball / seal retainer use a separate spanner to hold the large hexagon below it.



6. When free, pull the piston rod clear of the pump. Take care not to lose the two balls in the top of the pump 7. Carefully unscrew seal retainer to remove the old seal and replace if possible or replace whole piston if necessary. **Re-assemble pump in reverse order**

Inner Slide Tube Seal Replacement



A1. Unscrew air exchanger valve



A2. This will release inner slide tube from non return valve at the base manifold end



A3. Replace O'ring - Item 9



A4. Slide end cap back over tube and re-assemble



A5. Replace O'ring - Item 7

Fit new seal (Item 7) and apply a small amount of silicone grease around seal only

Re-assemble pump in reverse order