


# Macro Editor Overview

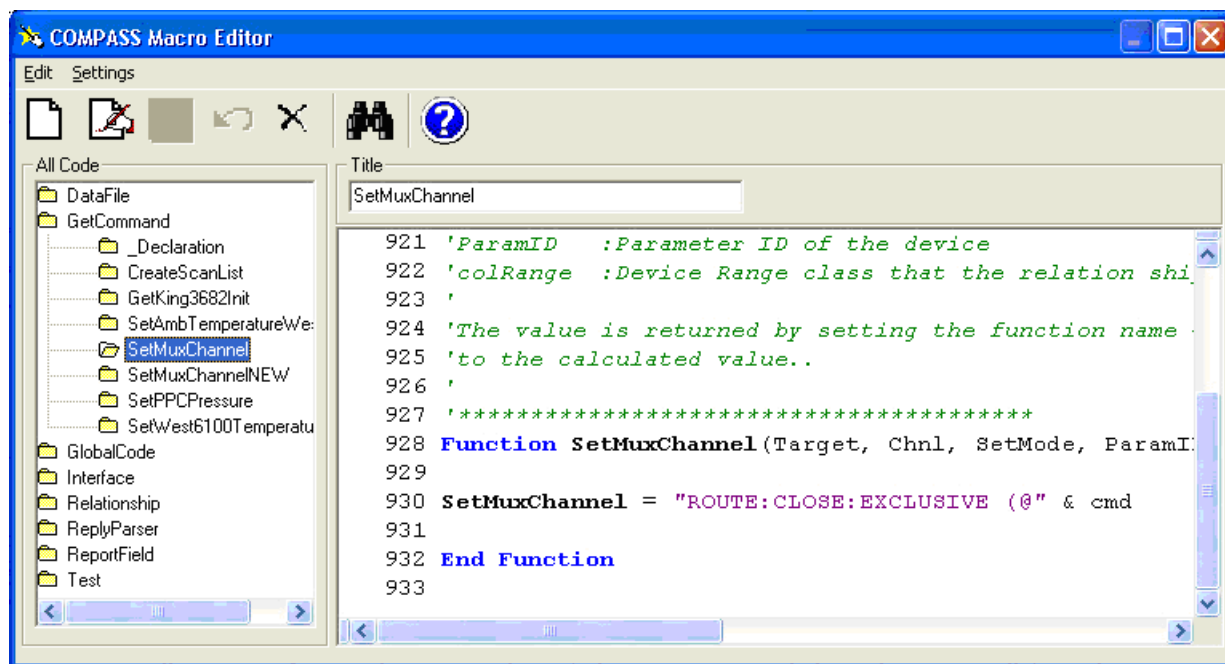


**COMPASS for Pressure** Macros open the door to a high level of program customization. Macros are available to read instruments, calculate instrument outputs, modify test operation and manipulate data in the Data File for custom reporting. Macros are defined and maintained by the [COMPASS Macro Editor](#).


 **Macros are an advanced COMPASS feature. Some programming knowledge is required to successfully create and use a macro. Before using a macro, make sure that the desired operation is not a standard COMPASS feature. In most cases, a macro is not necessary.**

 **COMPASS does not halt test operation in the event of a macro error. Make sure that a macro is functioning properly before running an unattended test.**

## COMPASS Macro Editor



Macros are VB Script functions that are called by **COMPASS** at specific times during test execution. One macro can represent many individual functions. Each macro type uses different arguments. Using these arguments, the code defined in the VB Script function can directly execute to complete an operation and return the results to **COMPASS**. In addition, the macro can call ActiveX controls, DLLs, and other programs to complete a task. The code in the macro can change the state of object variables in **COMPASS** using the **COMPASS** object model.

 **Detailed information on VB Script is beyond the scope of this document. Visit [Microsoft MSDN](#) for a complete language reference. Realize that VB Script can call other programs that expose functions to the Windows environment. Therefore, any language that supports ActiveX technology can be used to develop the code used by the macro. The COMPASS macro would simply call this newly developed program.**