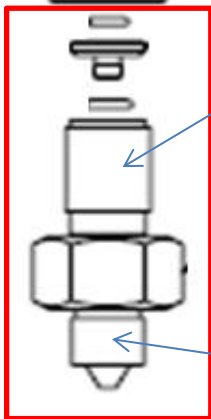


4294865		PK-DH500-P3000,DH500 TO P3000 TEST PORT ADAPTER, MWP 140 MPA
PN	Qty	Description
3919877	1	P104040, TEST STATION ATCL MOUNT, 9/16-18 UNF x 3/8 BSPM
3919892	1	P104042, INSERT FOR TEST STATION TO 1/8 FITTINGS
3865195	5	54-703-10, O-RING VITON 1/4 X 1/16 X SEC
3865163	5	54-703-008, O-RING, BLACK, VITON 3/16 X 1/16



Adapters are Included in kit,
4185780 PK-P3000-ADPTR-STD,ADAPTOR SET, P3000 STANDARD



3/8 BSPM Left Hand Thread (same as deadweight testers)

Items in red box are Included in kit,
4294865 DH500 TO P3000 TEST PORT ADAPTER

9/16-18 UNF Thread (also called DH500)

4185780		PK-P3000-ADPTR-STD,ADAPTOR SET, P3000 STANDARD
PN	Qty	Description
4236199	1	P104020-RND,ADAPTOR 1/8 BSP
4236208	1	P104021-RND,ADAPTOR 1/4 BSP
4236213	1	P104022-RND,ADAPTOR 3/8 BSP
4236224	1	P104023-RND,ADAPTOR 1/2 BSP
4236158	1	P104024-RND,ADAPTOR 1/8 NPT
4236164	1	P104025-RND,ADAPTOR 1/4 NPT
4236236	1	P104028-RND,ADAPTOR M20 X 1.5
4236249	1	P104036-RND,ADAPTOR M14 X 1.5
4236186	1	P104027-RND,ADAPTOR 1/2 NPT
4236173	1	P104026-RND,ADAPTOR 3/8 NPT

Connections

Fit the device under test (DUT) to the test port using the method described below:

⚠ Caution

Ensure that all devices are internally clean and free from contamination before connecting to the tester.

Particle contamination can damage the sensitive piston assemblies, valve seats and screw pump.

To avoid cross-contamination from other fluids, and protect the system from particulates, we recommend the use of a Liquid-to-Liquid Separator (see Chapter 7, Ancillary Equipment).

⚠ Warning

DO NOT use Teflon/PTFE tape on these connections, as this will prevent correct sealing. The Gauge Adapter sealing system is designed for hand-tight sealing up to 20,000 psi / 1,400 bar—wrenches or similar tools are not required—over tightening can cause damage to threads or sealing faces.

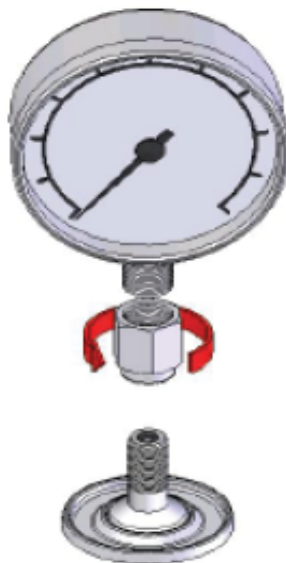
Before connection, ensure that there is an O-ring fitted to the test port.

Check that the sealing face of the device to be fitted is clean and undamaged, as scratches or dents can form leak-paths.

Note

The thread on the test port, and the lower part of the gauge adapters is LEFT-HANDED. The following procedure details the correct method for mounting devices using these adapters:

1. Screw the appropriate gauge adapter fully on to the instrument to be tested.



2. Screw assembly down COUNTER-CLOCKWISE on to test port.

Note

Hand-tight is sufficient; ensure that the bottom face contacts the O-ring on the test port.



Figure 2-2. Making Pressure Connections

gjr007.bmp



Figure 2-3. Adjusting Pressure Connections

gjr008.bmp

3. To adjust the position to face forward, hold the gauge adapter and turn the instrument COUNTER-CLOCKWISE, so that it faces forward.

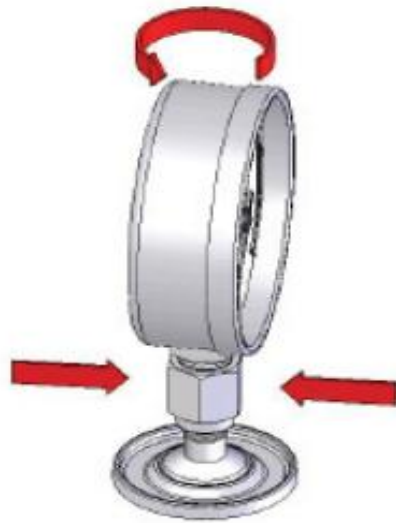
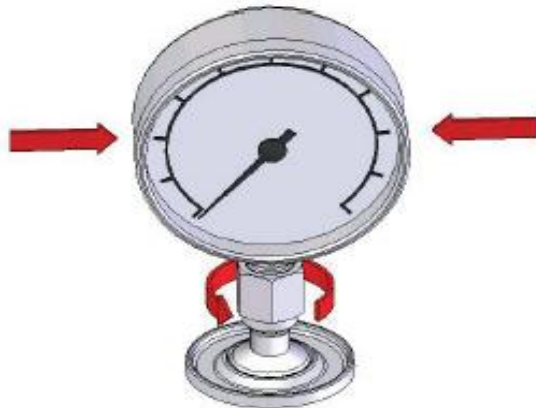


Figure 2-4. Adjust Gauge Position

gjn009.bmp

4. Hold the instrument steady, while turning the gauge adapter COUNTER-CLOCKWISE until it pulls down onto the O-ring.



Test Port Insert

For devices with 1/8 BSP or NPT mounting threads, the diameter of the thread is very close to the effective sealing diameter of the O-ring fitted to the test port.

This can make it difficult to achieve a good seal. When mounting these devices, use the test port insert (stored in the spare seals container) as shown in Figure 2-6.

